

Pathblazer/Hybridge- Assignment Builder

This page allows Teachers to create their own assignments to assign to students and classes. Teachers can browse curriculum by sequences, skills, or specific objects by state correlations.

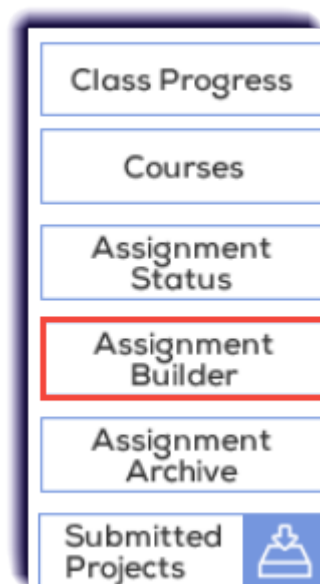
PERMISSIONS

To follow the steps on this page you will need Teacher account.

1. Click **Courses & Assignments**.



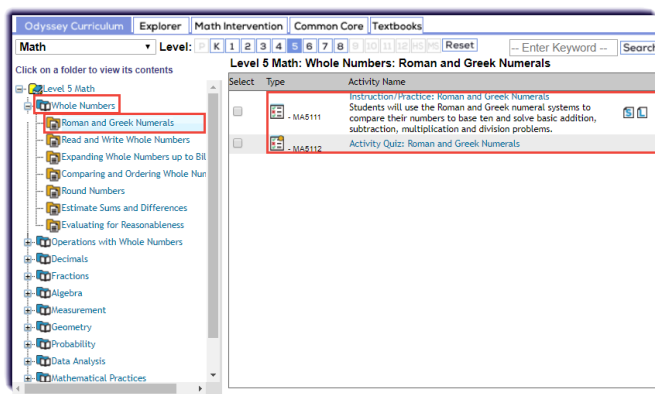
2. Click **Assignment Builder**.



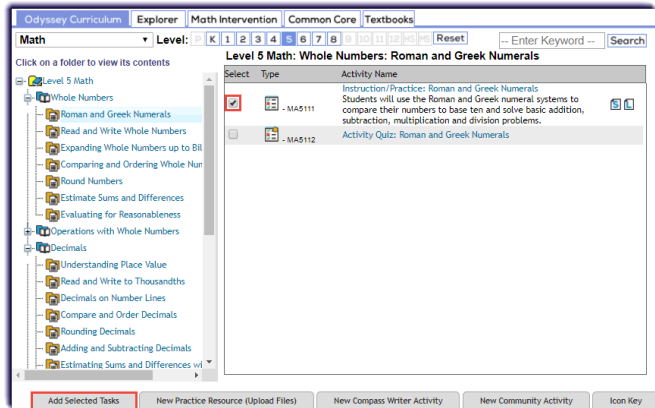
3. Choose the tab of the desired curriculum, select a subject, a grade level, and whether to display by sequences, skills, or standards.



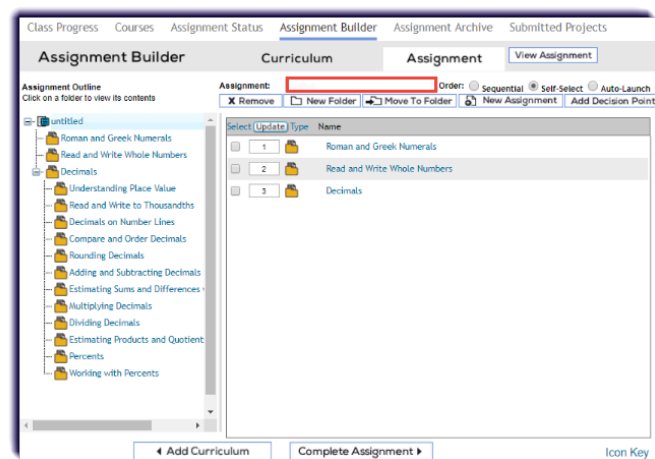
4. After setting the criteria, the available content to add to an Assignment will display. On the left side are the unit folders and nested lesson folders. Clicking a lesson folder will display that folder's individual activities on the right.



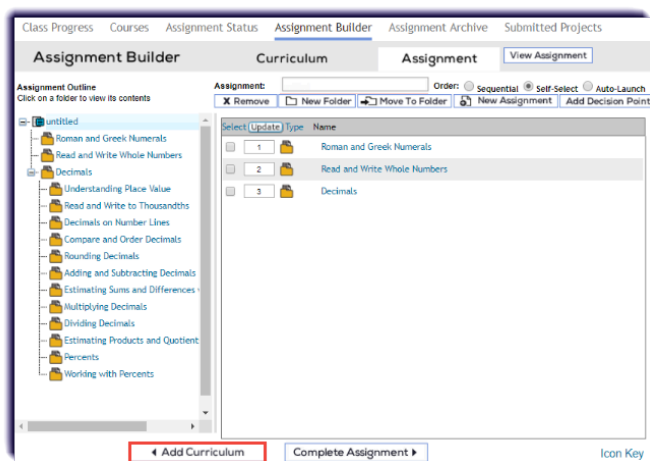
5. Check mark the desired activities or click a unit folder to have the option to select entire lessons. Then click **Add Selected Tasks**.



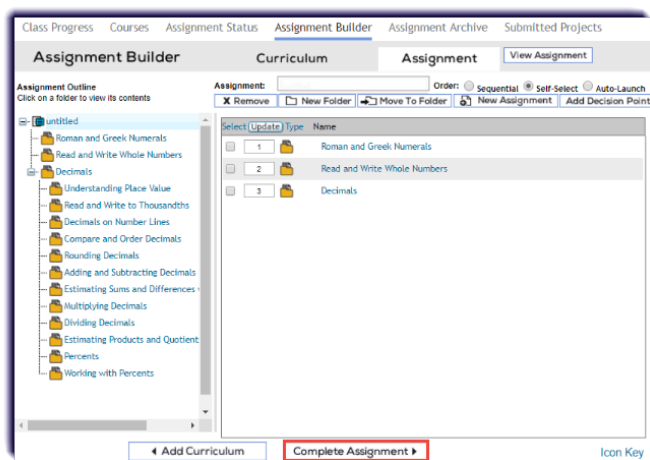
6. This page will show the items that were chosen to be added to the new Assignment. The activity order can be changed as well as adding/removing activities and setting Decision Points. Be sure to give the Assignment a unique name.



7. Add any additional content by selecting **Add Curriculum**.



8. Click **Complete Assignment**.



9. Categorize the Assignment. Then click **Next**. To learn more, click [here](#).

Complete Assignment Close

Categorize your assignment and click **Next** to continue.

Assignment Name: Math 4- With Decimals

Description:

Availability: My Assignments

Subject: Math

Level: Fourth

Solution: ☒ Pathblazer Reading ☒ Pathblazer Math ☒ Hybridge LA

Assignment Order: ☒ Sequential ☐ Self-Select ☐ Auto-Launch

Apply assignment order to all folders: ☐ Yes ☒ No

Suppress Duplicate Activities: ☐ Yes ☒ No

Show Resources: ☐ Yes ☒ No

Draft Mode: ☐ Yes ☒ No

Show Compass Writer: ☐ Yes ☒ No

Show Tool Kit: ☐ Yes ☒ No

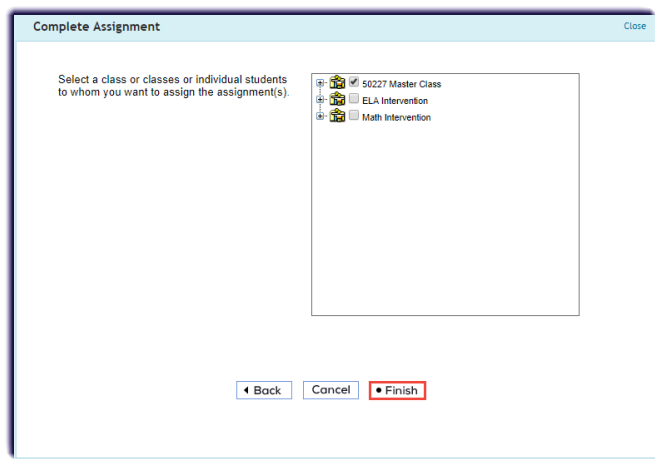
Assign to students now? ☒ Yes ☐ No, I'll assign it later

Cancel Next

Note: All folders with Decision Points in this assignment will remain in Sequential or Auto-Launch mode.

Note: The Tool Kit display option has changed.

10. Select one or more classes. Then click **Finish**.



11. This is the confirmation page. Click **Close**.

